

USAG Wiesbaden

Bike 2 Work Program



USAG Wiesbaden

Bike 2 Work Program

Table of Contents:

<u>Departure Location</u> 	<u>Page</u> 
Mainz Kastel Station3
Amelia Earhart Office Tower4
Hainerberg Housing Area5
Crestview Housing Area6
Aukamm Housing Area7
Web Site ExplanationBack Cover

(All routes travel to Clay Kaserne)

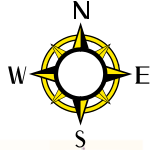
PLEASE NOTE:

All routes are on bicycle paths,
farmer roads or normal streets.

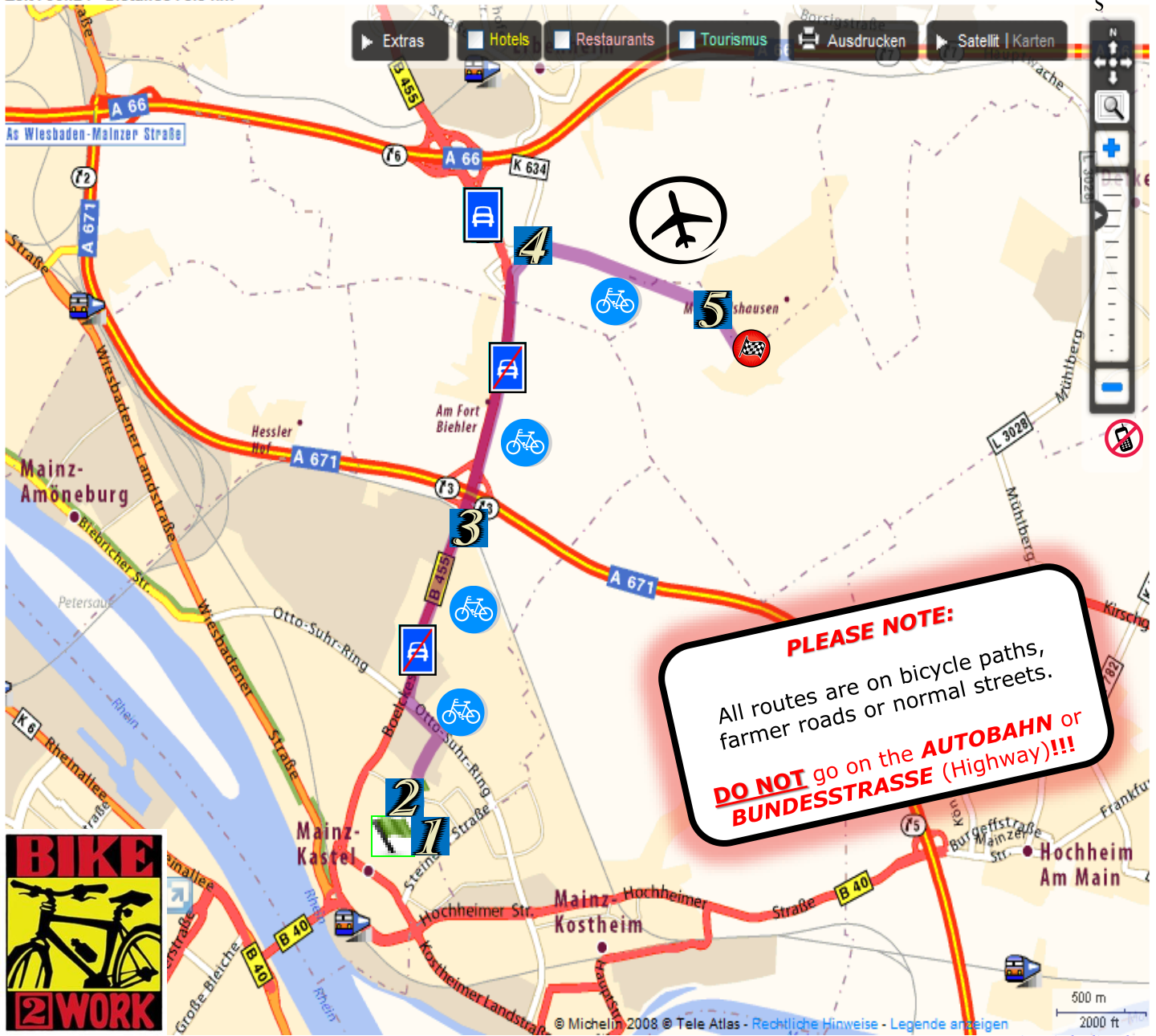
DO NOT go on the **AUTOBAHN** or
BUNDESSTRASSE (Highway)!!!



Mainz Kastel Station to Clay Kaserne



Ludwig-Wolker-Straße Wiesbaden - Mechtildshausen Hofgut 65205 Wiesbaden
 Zeit : 00h24 - Distance : 5.5 km



PLEASE NOTE:
 All routes are on bicycle paths,
 farmer roads or normal streets.
DO NOT go on the **AUTOBAHN** or
BUNDESSTRASSE (Highway)!!!



START: Mainz Kastel, Ludwig Wolker Straße

1 Continue on : Ludwig Wolker Straße

2 Continue through Wiesbaden 2 km

Turn Right onto: Schmalweg (0.5 km)

Turn Left onto: Otto-Suhr-Ring (0.3 km)

Turn Right onto: B455 / Boelckestraße (1.2 km)

Exit: Wiesbaden 2 km 00h08

3 Continue on: B455 1.8 km 4 km 00h16

4 Turn Right onto: K634 1.4 km 5 km 00h22

5 Arrival in Mechtildshausen 0.4 km

Turn Right onto: Flugplatz Erbenheim (0.4 km)

FINISH: Delkenheim, Mechtildshausen Hofgut 5.5 km 00h24

? Trip Information

🕒 Estimated Time: 24min

📏 Distance: 5.5 km

LEGEND:

Bike Route

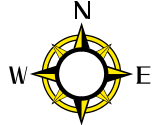
WSB Airfield

Express Way

No Express Way

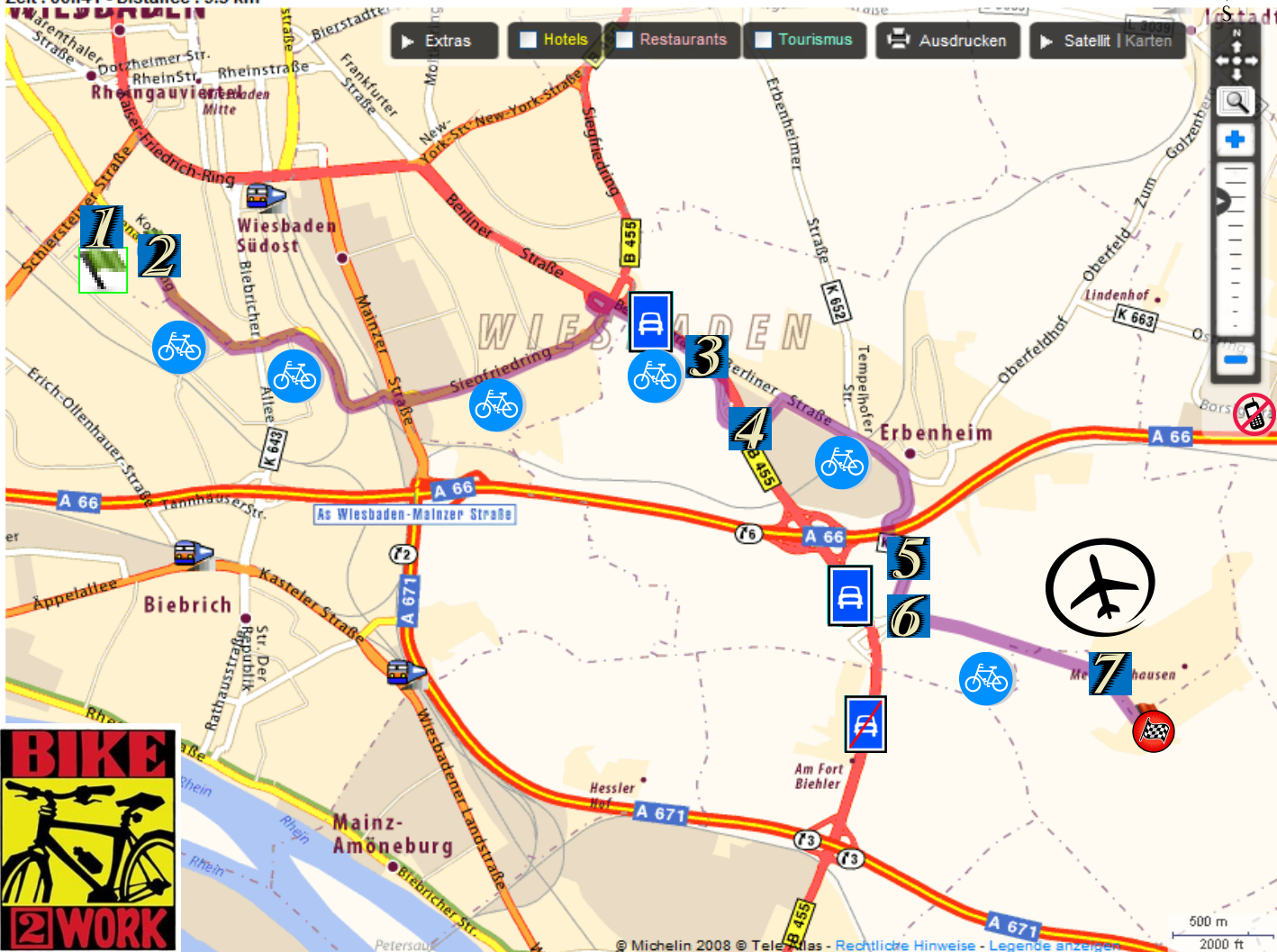
Use Shoulder/Path

www.viamichelin.de



Konrad-Adenauer-Ring 44 Wiesbaden - Mechtildshausen Hofgut 65205 Wiesbaden

Zeit : 00h41 - Distance : 9.5 km



START: Wiesbaden, Konrad Adenauer Ring 44

- 1** Continue on: **Konrad Adenauer Ring**
- 2** Continue through **Wiesbaden** 5 km
Continue on **Konrad Adenauer Ring** (1.1 km)
Turn Left onto: **Theodor Heuss Ring** (1.3 km)
Continue on: **Siegfriedring** (1.5 km)
Turn Left onto: **B455** (1 km)
Exit Wiesbaden 5 km 00h20
- 3** Continue on: **B455** 0.6 km 5.5 km 00h23
- 4** Continue through **Erbenheim** 1.9 km
Continue on (0.3 km)
Turn Right onto: **K634 / Berliner Straße** (0.9 km)
Continue on **K634 / Zum Friedhof** (0.7 km)
Exit Erbenheim 7.5 km 00h31
- 5** Continue on **K634** 0.5 km 8 km 00h33
- 6** Turn Left 1.4 km 9.5 km 00h39
- 7** Arrival in **Mechtildshausen** 0.4 km
Turn Right onto: **Flugplatz Erbenheim** (0.4 km)

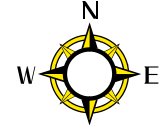
FINISH: Delkenheim, Mechtildshausen Hofgut 9.5 km 00h41

- Trip Information
- Estimated Time: 41min
- Distance: 9.5 km

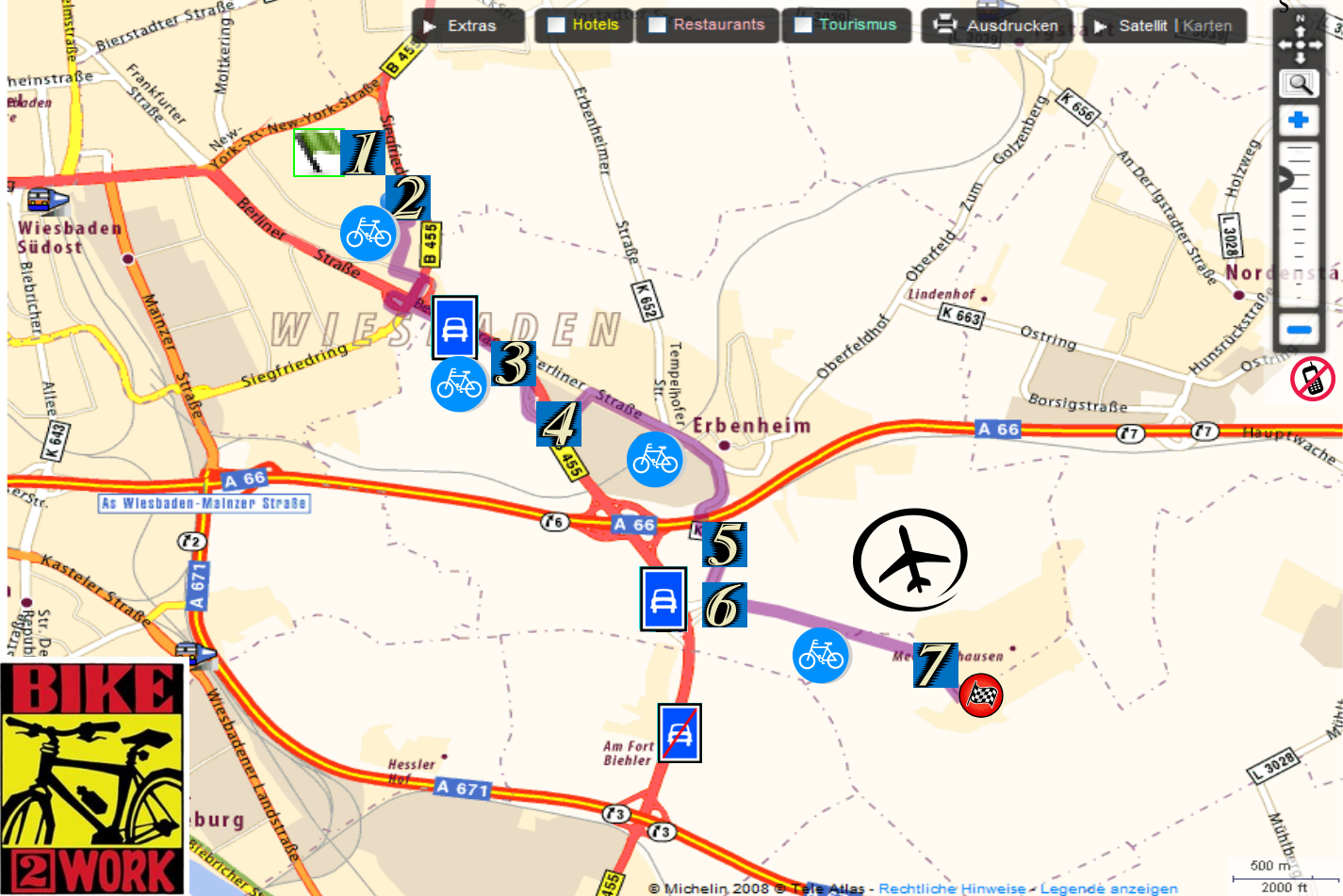
LEGEND:

- Bike Route
- WSB Airfield
- Express Way
- No Express Way
- Use Shoulder/Path

Hainerberg Housing Area to Clay Kaserne



Colorado-Straße Wiesbaden - Mechtildshausen Hofgut 65205 Wiesbaden
 Zeit : 00h29 - Distance : 7 km



START: Wiesbaden, Colorado-Straße

- 1** Continue on: **Colorado-Straße**
- 2** Continue through **Wiesbaden** 2 km
 - Continue on **Colorado-Straße** (0.2 km)
 - Turn Right onto: **Washington Straße** (<0.1 km)
 - Turn Left onto: **John-F.-Kennedy-Straße** (0.4 km)
 - Turn Left onto: **Abraham-Lincoln-Straße** (0.2 km)
 - Turn Right onto: **B455 / Siegfriedring** (0.2 km)
 - Continue on **B455** Direction: **MZ-Kastel / WI-Erbenheim** (1.1 km)
 - Exit Wiesbaden 2 km 00h08
- 3** Continue on : **B455** 0.6 km 2.5 km 00h11
- 4** Continue through **Erbenheim** 1.9 km
 - Continue on (0.3 km)
 - Turn Right onto: **K634 / Berliner Straße** (0.9 km)
 - Continue on **K634 / Zum Friedhof** (0.7 km)
 - Exit Erbenheim 4.5 km 00h19
- 5** Continue on to the **K634** 0.5 km 5 km 00h21
- 6** Turn Left 1.4 km 6.5 km 00h27
- 7** Arrival in **Mechtildshausen** 0.4 km
 - Turn Right onto: **Flugplatz Erbenheim** (0.4 km)

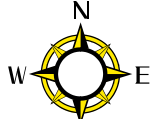
FINISH: Delkenheim, Mechtildshausen Hofgut 7 km 00h29

- Trip Information
- Estimated Time: 29min
- Distance: 7 km

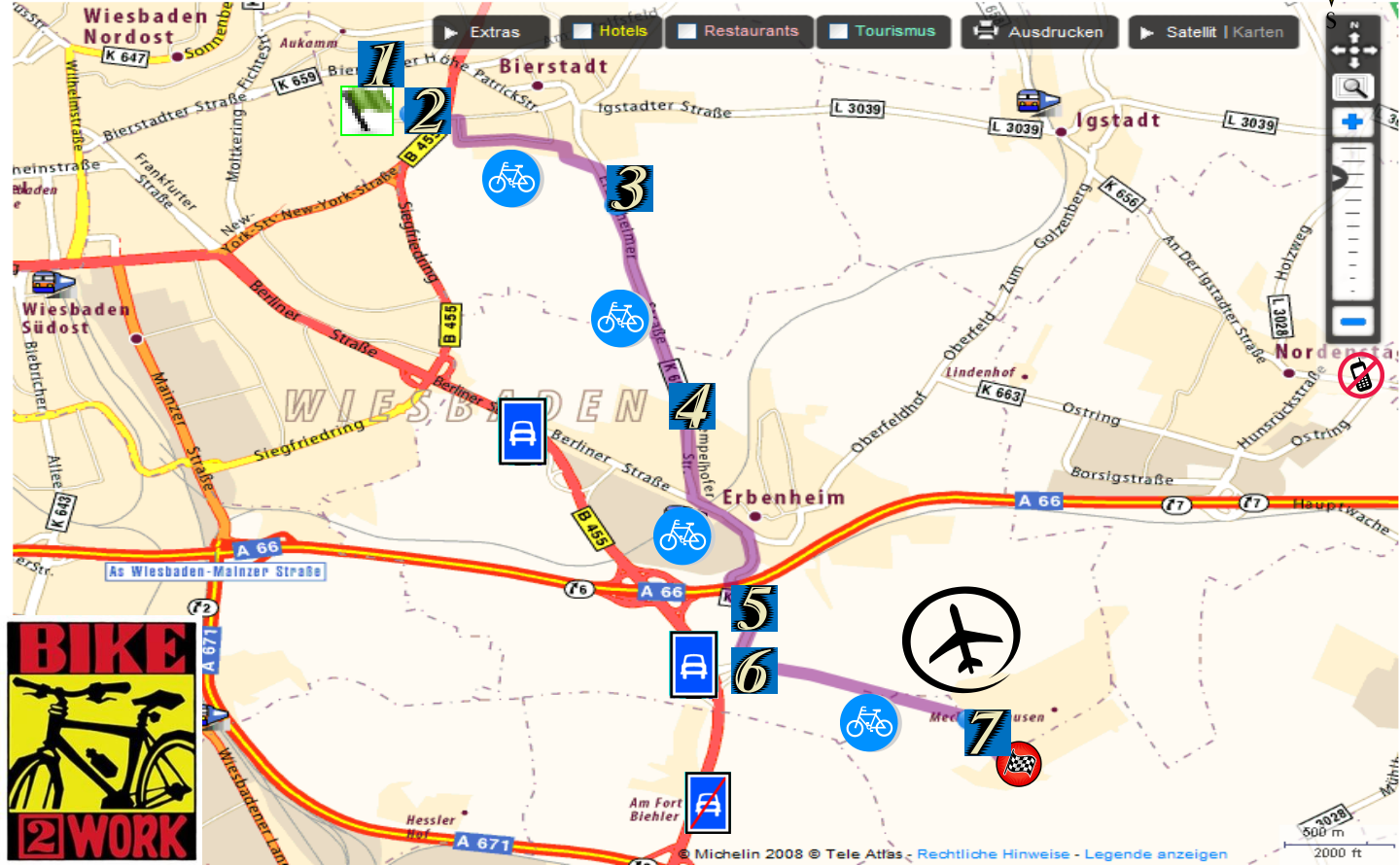
- LEGEND:
- Bike Route
 - WSB Airfield
 - Express Way
 - No Express Way
 - Use Shoulder/Path

www.viamichelin.de

Crestview Housing Area to Clay Kaserne



Venusstraße Wiesbaden - Mechtildshausen Hofgut 65205 Wiesbaden
 Zeit : 00h31 - Distance : 7.5 km



START: Bierstadt, Venusstraße

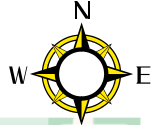
- 1** Continue on: **Venusstraße**
- 2** Continue through **Wiesbaden** 1.7 km
 - Continue on **Venusstraße** (<0.1 km)
 - Turn Left onto: **Sonnenstraße** (0.2 km)
 - Continue on: **Schultheißstraße** (<0.1 km)
 - Turn Right onto: **Fliednerstraße** (0.5 km)
 - Turn Right onto: **Zwergweg** (0.3 km)
 - Turn Right onto: **Honiggasse** (<0.1 km)
 - Turn Left onto: **Wallauer Straße** (0.1 km)
 - Turn Right onto: **K652 / Erbenheimer Straße** (0.4 km)
 - Exit Wiesbaden 1.7 km 00h07
- 3** Continue on **K652** 1.6 km 3.5 km 00h14
- 4** Continue through **Erbenheim** 1.8 km
 - Continue on: **K652** (0.7 km)
 - Turn Left onto: **K634 / Berliner Straße** (0.4 km)
 - Continue on **K634 / Zum Friedhof** (0.7 km)
 - Exit Erbenheim 5 km 00h21
- 5** Continue on **K634** 0.5 km 5.5 km 00h23
- 6** Turn Left 1.4 km 7 km 00h29
- 7** Arrival in **Mechtildshausen** 0.4 km
 - Turn Right onto: **Flugplatz Erbenheim** (0.4 km)

FINISH: Delkenheim, Mechtildshausen Hofgut 7.5 km 00h31

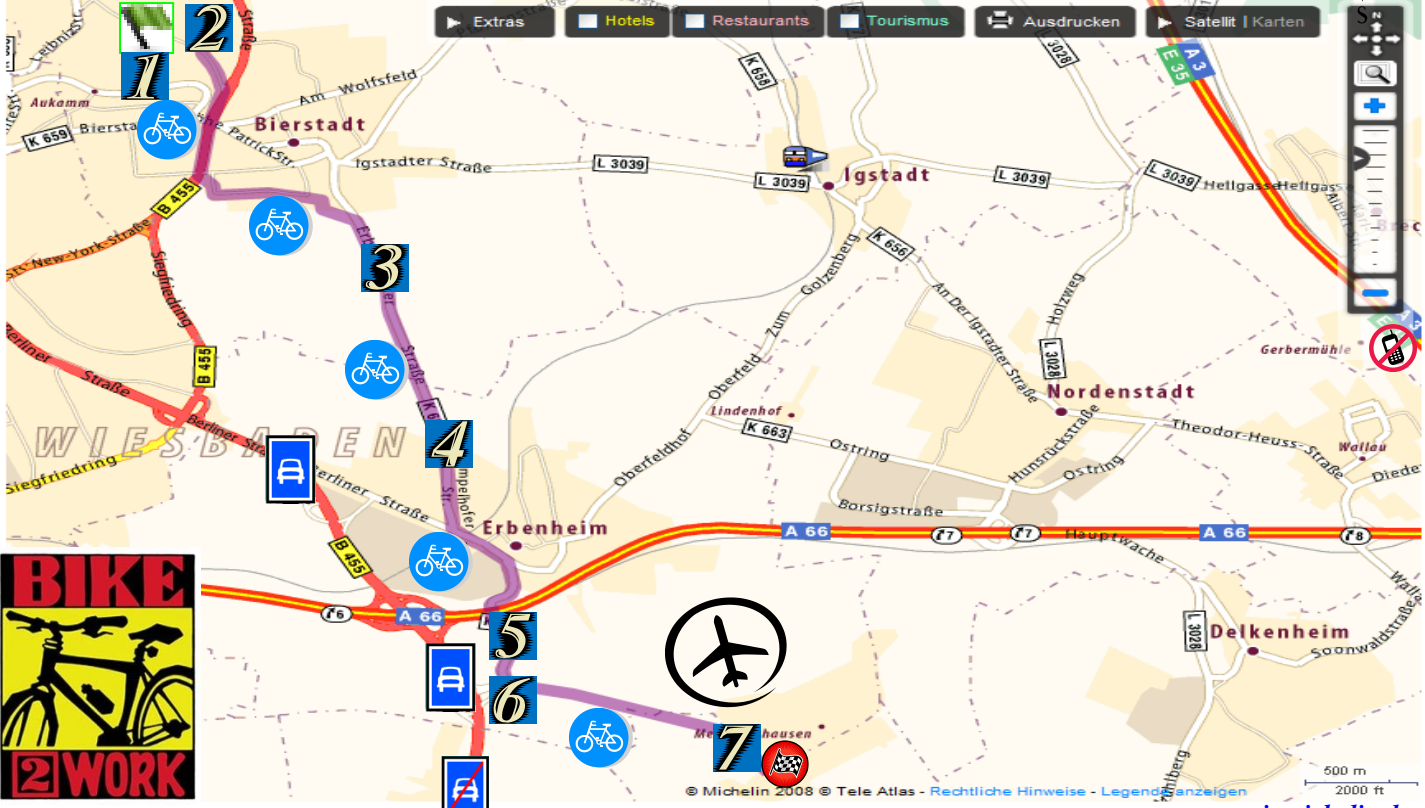
- Trip Information**
- Estimated Time: 31min
- Distance: 7.5 km

- LEGEND:**
- Bike Route
 - WSB Airfield
 - Express Way
 - No Express Way
 - Use Shoulder/Path

Aukamm Housing Area to Clay Kaserne



Hessenstraße Wiesbaden - Mechtildshausen Hofgut 65205 Wiesbaden
 Zeit : 00h35 - Distance : 8.5 km



START: Bierstadt, Hessenstraße

- 1** Continue on: **Hessenstraße**
- 2** Continue through **Wiesbaden** 2.5 km
 - Continue on **Hessenstraße** (0.3 km)
 - Turn Left onto: **Rheinland Straße** (0.4 km)
 - Continue on: **B455 / Nauroder Straße** (0.2 km)
 - Continue on: **B455** Direction: **A66 MZ-Kastel/WI-Erbenheim/Stadtmitte** (0.4 km)
 - Turn Left onto: **Schultheißstraße** (<0.1 km)
 - Turn Right onto: **Fliednerstraße** (0.5 km)
 - Turn Right onto: **Zwergweg** (0.3 km)
 - Turn Right onto: **Honiggasse** (<0.1 km)
 - Turn Left onto: **Wallauer Straße** (0.1 km)
 - Turn Right onto: **K652 / Erbenheimer Straße** (0.4 km)
 - Exit Wiesbaden 2.5 km 00h11
- 3** Continue on **K652** 1.6 km 4.5 km 00h18
- 4** Continue through **Erbenheim** 1.8 km
 - Continue on: **K652** (0.7 km)
 - Turn Left onto: **K634 / Berliner Straße** (0.4 km)
 - Continue on **K634 / Zum Friedhof** (0.7 km)
 - Exit Erbenheim 6 km 00h26
- 5** Continue on **K634** 0.5 km 6.5 km 00h28
- 6** Turn Left 1.4 km 8 km 00h33
- 7** Arrical in **Mechtildshausen** 0.4 km
 - Turn Right onto: **Flugplatz Erbenheim** (0.4 km)

FINISH: Delkenheim, Mechtildshausen Hofgut 8.5 km 00h35

www.viamichelin.de

- Trip Information
- Estimated Time: 35min
- Distance: 8.5 km

- LEGEND:
- Bike Route
 - WSB Airfield
 - Express Way
 - No Express Way
 - Use Shoulder/Path

ViaMichelin: Routenplaner, Reiseführer, Straßenkarte, Stadtplan, Tourismus, Hotel, Restaurant - Windows Internet Explorer

http://www.viamichelin.de/viamichelin/deu/tpl/hme/MaHomePage.htm

File Edit View Favorites Tools Help

Windows Live Live Search What's New Profile Mail Photos Calendar MSN Share

ViaMichelin: Routenplaner, Reiseführer, Straßenkarte

ViaMichelin Bei Mein ViaMichelin einloggen - Anmelden Zugang zur Version für geringe Bandbreite - Sprache: Deutsch

Routenplaner Karten Hotels, Restaurants & Tourismus Produkte

Eine Route berechnen

Abfahrt

Adresse, Bahnhof...

PLZ, Stadt, Ort...

Land

Meine Favoriten

→ Etappe einfügen

Ankunft

Adresse, Bahnhof...

PLZ, Stadt, Ort...

Land

Meine Favoriten

Routenarten

Empfohlen von Michelin Zu Fuß

Schnellste Mit dem Fahrrad

Kürzeste

Sehenswert

Wirtschaftlich

→ Weitere Optionen

Auf der Karte finden

Adresse, Bahnhof...

PLZ, Stadt, Ort...

Land

Meine Favoriten

Auf der Karte anzeigen

Hotels


Restaurants aus dem MICHELIN-Führer

- Die besten preiswerten Adressen
- Die Sterne-Restaurants
- Die schönsten Restaurants

Ziele aus dem Grünen Reiseführer

BIKE

2 WORK



Web Site: www.viamichelin.de

- Sprache = Language
- Mit dem Fahrrad = By Bicycle
- Abfahrt = Departure
- Ankunft = Destination

N 

CELL PHONES!

